

# CUMULUS lounge & soft furniture

Design by Kazuko Okamoto



## FEATURES

- One or two seater
- Three heights of the backrests
- Combination of different colours of backrests and seats

## QUALITY STANDARD

- EN 16139:2013

## GUARANTEE

- 3 years

## TECHNICAL INFORMATION

### Type

- Lounge chairs, sofas and modular system.

### Legs

- Metal frame feet (rectangular tube 30x30x2 mm) with plastic glides.

### Seats

- Seats made from chipboard 15 mm, plywood 4 and 15 mm;
- Upper part is foam coated HR5560 (55 kg/m<sup>3</sup>);
- Upholstered with fabric.

### Armrests and backrests

- Armrests and backrests made of MFP and plywood 15 mm;
- Softened with HR molded foam details (60 kg/m<sup>3</sup>);
- Upholstered with fabric.

### Connecting brackets

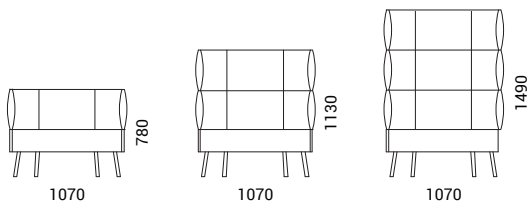
- Connecting brackets (“U” shape) made from metal sheet (3 mm) for modules with right or left armrests / panels.

### Swivel table

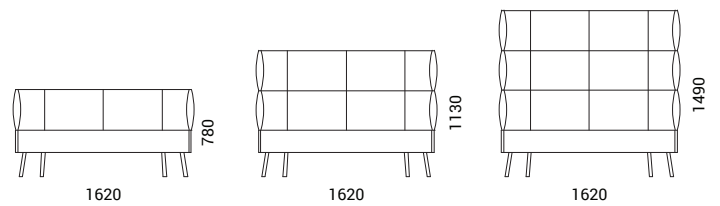
- Swivel table fixed by bolts to left or right side of the frame – for one-seater or to the centre of the frame – for two-seater;
- Top made from 19 mm MDF laminated by HPL with painted / lacquered edges;
- Table holder (“L” shape) made from metal tube  $\varnothing 25 \times 2$  mm.

## RANGE

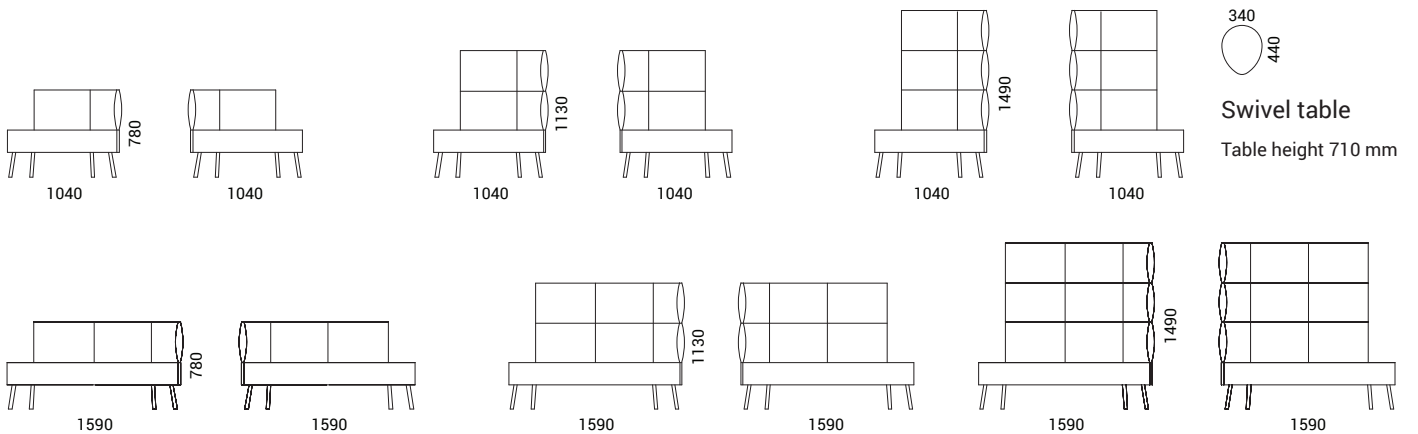
### Lounge chairs



### Sofas



### Modular system

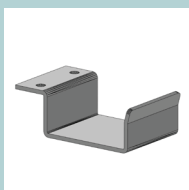


Seat height 420 mm

### Optional



Swivel table



Connecting brackets